



If an inmate needs medical care it is provided in the new detention facility's completely equipped modern medical clinic

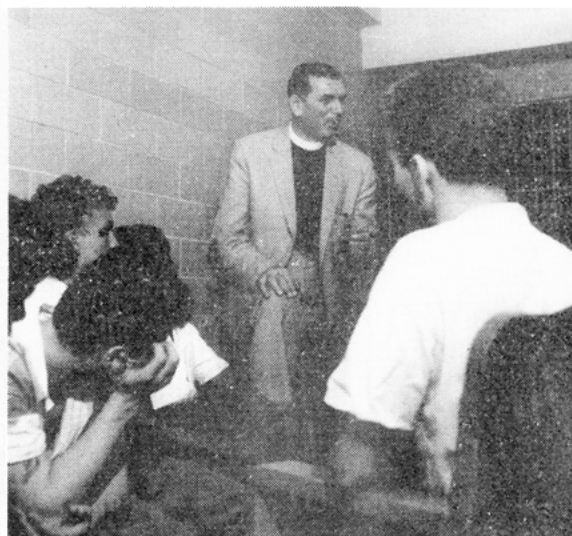
Photo by Jack Balletti, courtesy of King Features Syndicate

to keep the youths beneficially occupied, provide for a release of tensions, and modification of hostile attitudes. For those who are motivated to work on their social and personality problems, social service, counselling (individual and group) and therapy (individual and group) are available. Thus, the program is not only geared for adjustment to institutional life but to an attempt to change "attitudes" towards society and to return the individual to the community as a law abiding citizen. Family contacts are made and inquiries answered wherever possible and referrals to agencies (treatment, employment, social and religious) made whenever practicable. At any one time, approximately one-hundred adolescents are involved in a treatment or social educational type relationship with the staff of the Youth Guidance Division.

Problems and Future Plans

Although we have received certain increases in staff over the past two years, we are considerably un-

derstaffed in attempting to involve all of the many inmates who are motivated to take advantage of these services. While we may be pleased with the architectural advantages of this new \$11,000,000 institution, we still must recognize the fact that this facility was not built as a rehabilitation-type institution and that it is inadequate for the intensive program needs which the adolescents require. Prison buildings must be adequate frameworks for rehabilitative programs, and must be built around a specific program need for proper 100% effective utilization. The Department of Correction needs an institution built specifically for the housing and rehabilitation programming necessary for the City's adolescents being held for trial or court disposition. The current plan to build an Adolescent Remand Shelter (Male) * should not be left to the slow fiscal processes involved in the usual manner but should be speeded up in terms of emergency need. With our current population trend, approximately 12,000 youths will go through our gates each year; they will not be effectively treated for adjustment to the community to which they will return, due to the inadequate state of our current resources.



Pastoral counselling is a regular feature of the adolescent detainee program. Religious services are regularly held at the institution on a voluntary basis for the various religious denominations.

Photo through courtesy of Three Lions

* *Project C-74, Adolescent Remand Shelters:* A site plan for property bounded by East Bay and Spofford Avenues, Edgewater Road, and the Bronx River was submitted to the Board of Estimate for a Remand Shelter to service the northern portion of the City. A scope of work was submitted to the Department of Public Works with the request to hire an architect. The 1957 Budget provided funds for site acquisition and for an architect's service. At this time, a decision on the availability of the site by the City Administrator and the City Planning Commission is pending.

The Bureau of Real Estate has been requested to locate a site in the lower part of New York City for another Adolescent Remand Shelter to service the southern part of our City.