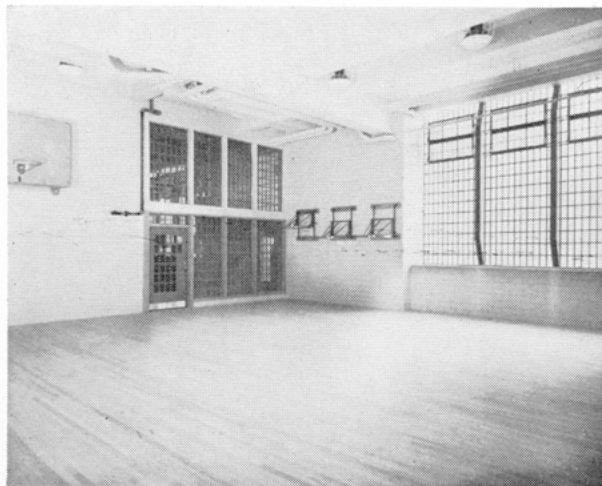


who will be transferred to this institution after screening at the Penitentiary Division for job assignments and the other will house the material witnesses. The cell doors of all the other cells are mechanically controlled from a central control box located outside the confines of the tier and inaccessible to the inmates.

The main kitchen on the *third floor* also houses the cooks' locker room and toilets; utility closet; various refrigerators; ice-making machine; stainless steel kettles; coffee urns, ranges, etc.; Trial inmates, incidentally, will be fed in their respective cells or in the four day rooms on each of the floors housing inmates whereas sentenced inmate help will be fed in a common mess hall on the *third floor* and the food served "cafeteria style." Separate dining rooms are provided for the staff.

The *fourth, fifth, sixth, seventh, eighth* and *ninth* floors each contain 120 cells and four day rooms. The *tenth* floor has 59 cells and two day rooms, together with two segregation cells for the housing of problem inmates who may have trouble adjusting themselves to the discipline and routine of the institution.



*There is a spacious indoor gymnasium at the new Brooklyn House of Detention for Men. For general recreational use there are also two open type roofs with wire mesh overhead covering.*

Space for medical and dental treatment facilities are provided for on the *eleventh floor*. This unit includes: doctor's office; examination and treatment room; dental office; two dental chairs; x-ray machine; a dark room for developing x-rays; and record rooms.



*The institutional auditorium at the new Brooklyn House of Detention for Men has seating accommodations for 204 persons. The inclusion of a three-way-sectionalized-revolving altar will enable us to use this area as a Chapel for the three major religious denominations. Inmate attendance at religious services is on a voluntary basis. Christian Science practitioners and Salvation Army leaders will also visit the institution to hold regular services and give counselling help.*

*The auditorium will also be available for the holding of lectures, showing of mental health, hygiene, social adjustment, vocational and educational motion picture films.*

On the *eleventh floor* religious facilities for Catholic, Protestant and Jewish faiths are provided in the form of a chapel with a revolving, three section altar, each section containing liturgical fittings for each of the faiths. Services are thus staggered and a simple turn of the altar makes the chapel appropriate for each of the denominations. A sliding screen in front of the altar will make it possible for other groups to hold meeting without liturgical fittings.

Physical facilities to help eliminate idleness include four (4) day rooms on each housing floor; two (2) large outdoor recreation areas on the *eleventh floor*; the chapel which can be transferred into an auditorium by simply lowering the screen fronting the altar, which auditorium will be used a great deal by the adolescent group; a gymnasium is provided on the *tenth floor*; together with a library; as well as a traveling library with headquarters on the *second floor*, and a space for library facilities on the *fourth floor* for use by the sentenced inmate help.

The basement area includes refrigerated store space for food storage; a garbage storage; a modern