

*In the various dayrooms throughout the new Brooklyn House of Detention for Men, special utility tables, and benches, which may be quickly and easily detached from wall cabinets, are to be installed (see above photograph). They will be used as dining tables for the inmates and also for recreation purposes. Regular tables are used in the dining room set aside for the sentenced inmate maintenance help.*

adults and adolescents, administrative desk for the classification officer, and a laundry chute connected with the laundry below for the disposition of vermin infested clothes for sterilization.

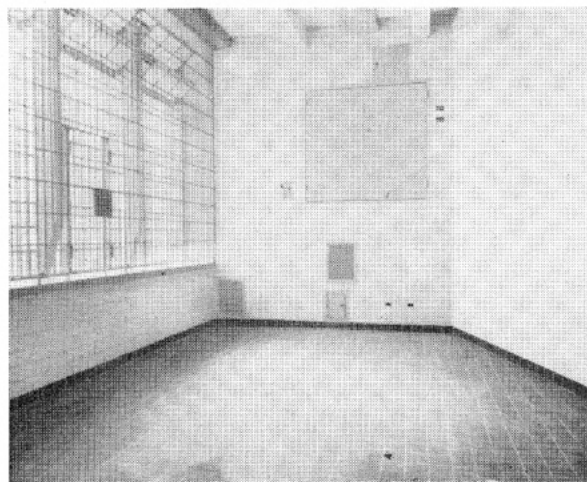
The inmates' visiting area is located on the *second floor*. This includes the waiting room; visiting booths; cashier's office and property room at which the visitor may deposit money or certain items of clothes for specific inmates. There are 42 visiting booths arranged so that no contact is possible between inmate and visitor although parties can see and speak to each other.

*The quarters for the prisoners includes interior cells*—cells situated back to back facing the outer walls of the prison and spaced usually ten to fifteen feet away from such walls. Between the cells there is a service corridor containing the plumbing, wiring and ventilating ducts. Each cell is 5 ft. 8 in. wide, 7 ft. 10 in. deep, 7 ft. 11 in. high on the main floor and 8 ft. 5 in. high on the mezzanine. Included in each cell is: a water closet; wash bowl; bed; table; bench; shelf; mirror; clothes hooks; ventilator outlet; and a light over the head of the bed. The bed is made of woven wire springs thereby eliminating the necessity of issuing mattresses. The table and bench is made of steel furniture; the mirror of polished stainless steel. The clothes hooks will sustain a load of only 30

pounds thereby reducing the possibility of suicide by hanging. Inmates will be housed on the third to the tenth floors inclusive. The cells are arranged in tiers and directly fronting the tier is a five foot wide, grille enclosed corridor which allows for the full custodial control and coverage for all occupants of the corridor by the officer-in-charge. The floors have been planned to allow for completely separated types of segregation divided into minimum, medium and maximum security. Between the grille housing the corridor and the prison wall there is an officer's walk which permits the correction officer to completely patrol a floor capable of holding 120 inmates without any physical contact with the inmate.

Fullest provisions have been provided to insure complete observation, including closed circuit T V, supervision and control of the inmate body for the correction officer on duty on each floor. All administrative facilities such as the pantry, day rooms, elevator lobby, fire stairway door, utility closet, barber shop, linen and interview rooms are easily observable by the officer. Other security precautions include: concealed alarm buttons strategically placed; signal stations located at various points to insure patrol by the officer as a precaution against suicides or other unsound practices.

The *third floor* which contains 36 minimum security cells has no locking devices other than the normal lock and key. These cells are divided into two sections, one of which will house sentenced inmate kitchen help



*Twenty-eight spacious, light and airy dayrooms located on the various floors of the new Brooklyn House of Detention for Men will be available for supervised and directed recreation programs. These dayroom areas will also be used for inmate dining rooms on each floor. There are also two large (mesh covered) roof areas, and a gymnasium. Custodial supervision, classification and segregation routines can thus be more effectively maintained throughout the institution.*

*To next annual report page.*