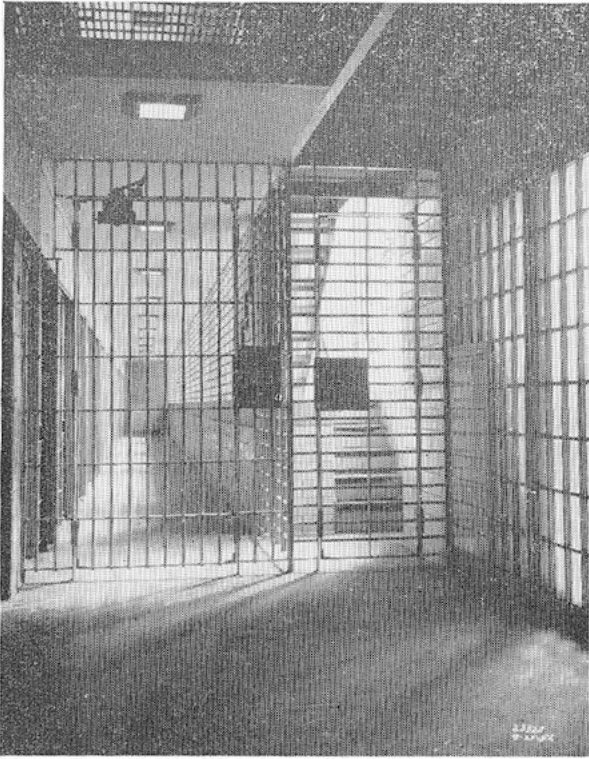


**Functional Description**  
**of the new**  
**BROOKLYN HOUSE OF DETENTION FOR MEN**



*A spacious light and airy cell block area at the new Brooklyn House of Detention for Men. On the various floors (4th to 9th incl.) there are four such quadrants each containing two tiers of 30 cells (15 on the upper level and 15 on the lower level) a total of 120 cells on each floor.*

Located on a block bounded on the north by State Street, on the south by Atlantic Avenue, on the east by Smith Street and on the west by Boerum Place, it will serve a population of almost three million (3,000,000) persons contained in a borough of approximately 90 square miles.

The new prison has a cell capacity for 817 inmates and includes facilities for extensive segregation; modern medical treatment; provisions for recreation and religious needs; a library; closed circuit T V; a physical interior as light, airy and clean as modern design will permit; and an organization of functional units to conform with modern prison management methods. It is connected with the existing Central Courts Building by means of an underground tunnel.

It contains the following units:

*Administrative offices* easily accessible to the public. These include: (1) the Central Office; (2) the Warden's Office; (3) the Deputy Warden's Office;

(4) the Captains' and Correction Officers' locker rooms; (5) Officers' briefing room; (6) Office of the Social Worker; (7) a control room containing the institutional arsenal, signalling devices, etc., which room is protected by bullet proof glass; and (8) an officer's lookout to provide ample security and protection of the entire area of the administrative office.

A *counsel room* is also located on the *first floor*. This room has been enclosed with bullet proof glass making it possible for the officer to be able to observe readily all occupants of the room. Law enforcement officers such as the F. B. I., District Attorney, etc., having occasion to visit officially an inmate will conduct their interviews in the interview room of the floor housing the inmate. For segregation purposes, visits to material witnesses will be held in a special visiting room on the *third floor*.

The *reception section* adjoins the administrative offices since the functions of both are closely inter-related. This section is located on the *first floor* and faces the prison yard. Prisoners received from the Central Courts Building and from the various courts scattered throughout the borough will be processed in the receiving room. It contains four (4) pens for the reception of adult inmates and two (2) separate ones for the adolescents. These units include showers, clothes box, medical examination room, inspectoscope, administrative and fingerprinting desks for



*The measurements of a typical cell in the new Brooklyn House of Detention for Men are 5 ft. 8 in. wide by 7 ft. 10 in. deep and 7 ft. 11 in. high on the flats (8 ft. 5 in. on the mezzanine section).*